



## Shellfish Survey Report Town of Brunswick, Maine June - December, 2021

Prepared by: Matt Nixon, Principal, MRF

### Summary

Between June 28<sup>th</sup>, 2021 and December 1<sup>st</sup>, 2021, Muddy River Farm staff assisted the Town of Brunswick with shellfish resource surveys across all productive Brunswick intertidal flats. Standard survey methods recommended by the Maine Department of Marine Resources were used, consisting of random plots of 1' by 2' sampled in a grid of 100' or 200' intervals across growing areas, with every individual *Mya arenaria* (soft-shell clam) and *Mercenaria mercenaria* (quahog) recorded and measured for length of shell.

A total of **686** plots were sampled across the Town of Brunswick intertidal flats. The area covered by this survey included **399** acres of flats designated as productive soft-shell clam growing area, and **351** acres of flats designated as productive quahog growing area; some of these areas overlapped, where both species coexist. Species not surveyed but which were observed periodically throughout the surveys were razor clams, blood and sand worms. Our crews sampled and measures **3,190** individual soft-shell clams and **895** individual quahogs. Data from the surveys was entered into spreadsheets designed by the Maine Department of Marine Resources. Shellfish crop projections for 2022/23 harvest season are 1.37 million pounds of Softshell clams and 9.7 million pieces of quahogs. Using license calculation formulas 225 and 209 digger days and each digger harvesting 2.0 bushels equals 60.9 softshell licenses and 34.6 quahog licenses.

### Table of Summaries

Barnes Landing .....	2
Big Bullpen .....	3
Bull Rock .....	4
Bunganuc .....	5
Buttermilk Cove.....	6
Clay Cove .....	7
Harpswell Cove.....	8
Little Bullpen .....	9
Long Reach.....	10
Maquoit.....	11
Middle Bay.....	12
Miller Creek.....	13
Thomas Point Beach .....	14



## Barnes Landing

**Date:** 6/28/2021  
**Flat:** Barnes Landing  
**Crew:** Devereaux/MRF

**Plot size:** 1' x 2' @ 100 ft  
**# Plots:** 38  
**# Acres:** 5

Softshell Clams		
Length (in)	# of Clams	% Number
.2	0	0.0%
.4	4	3.7%
.6	2	1.8%
.8	0	0.0%
1	3	2.8%
1.2	6	5.5%
1.4	17	15.6%
1.6	15	13.8%
1.8	21	19.3%
2.0	12	11.0%
2.2	14	12.8%
2.4	7	6.4%
2.6	2	1.8%
2.8	5	4.6%
3+	1	0.9%

Total # of Clams	109
Total # of Clams > 2 in	41
% of clams > 2 in	37.61%
Total Average Bu./Acre	47.93
Total Avg. Bu./Acre > 2 in	30.84
Total standing crop (bu)	240
Total standing crop > 2 in	154
% of crop > 2 in	64.35%

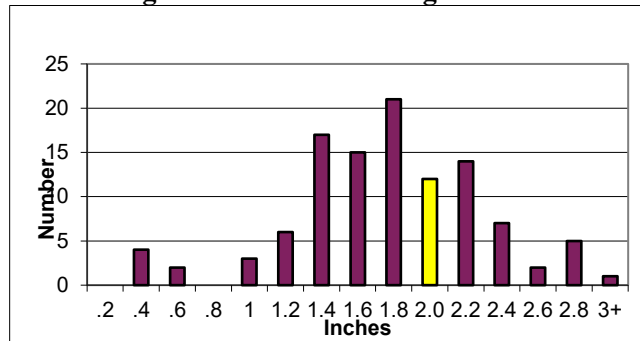
### Softshell

Total # of Clams	46
Total # of Clams > 2 in	31
% of clams > 2 in	67.39%
Total Average Bu./Acre	42.80
Total Avg. Bu./Acre > 2 in	40.23
Total standing crop (bu)	214
Total standing crop > 2 in	201
% of crop > 2 in	94.00%

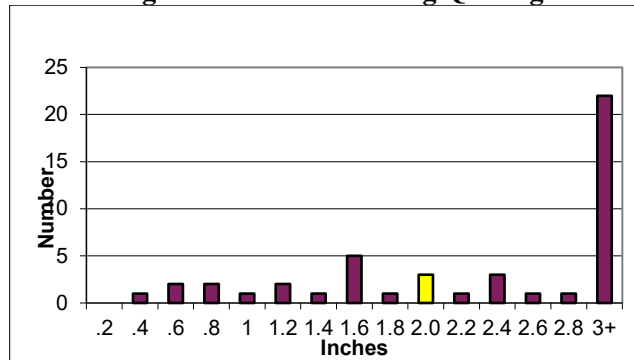
### Quahog

Quahogs		
Length (in)	# of Clams	% Number
.2	0	0.0%
.4	1	2.2%
.6	2	4.3%
.8	2	4.3%
1	1	2.2%
1.2	2	4.3%
1.4	1	2.2%
1.6	5	10.9%
1.8	1	2.2%
2.0	3	6.5%
2.2	1	2.2%
2.4	3	6.5%
2.6	1	2.2%
2.8	1	2.2%
3+	22	47.8%

**Figure 1. Barnes Landing Softshell**



**Figure 2. Barnes Landing Quahogs**





## Big Bullpen

**Date:** 7/29/2021  
**Flat:** Big Bullpen  
**Crew:** Devereaux/MRF

**Plot size:** 1' x 2' @ 200 ft  
**# Plots:** 78  
**# Acres:** SS - 25, Q - 25  
**Softshell**

Softshell Clams		
Length (in)	# of Clams	% Number
.2	2	0.6%
.4	2	0.6%
.6	2	0.6%
.8	13	4.1%
1	14	4.4%
1.2	15	4.7%
1.4	34	10.8%
1.6	43	13.6%
1.8	53	16.8%
2.0	47	14.9%
2.2	32	10.1%
2.4	21	6.6%
2.6	19	6.0%
2.8	11	3.5%
3+	8	2.5%

Total # of Clams	316
Total # of Clams > 2 in	138
% of clams > 2 in	43.67%
Total Average Bu./Acre	73.39
Total Avg. Bu./Acre > 2 in	52.02
Total standing crop (bu)	1835
Total standing crop > 2 in	1301
% of crop > 2 in	70.88%

### Quahog

Total # of Clams	1
Total # of Clams > 2 in	0
% of clams > 2 in	0.00%
Total Average Bu./Acre	0.19
Total Avg. Bu./Acre > 2 in	0.00
Total standing crop (bu)	5
Total standing crop > 2 in	0
% of crop > 2 in	0.00%

Figure 3. Big Bullpen Softshell

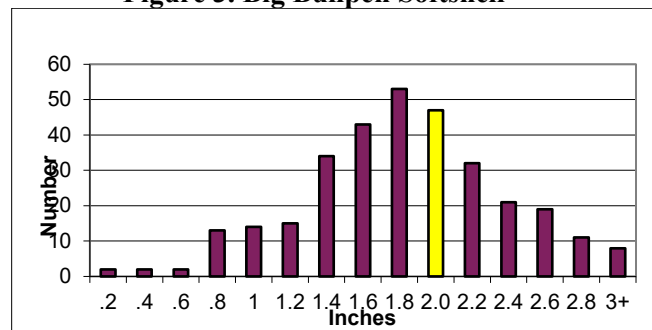
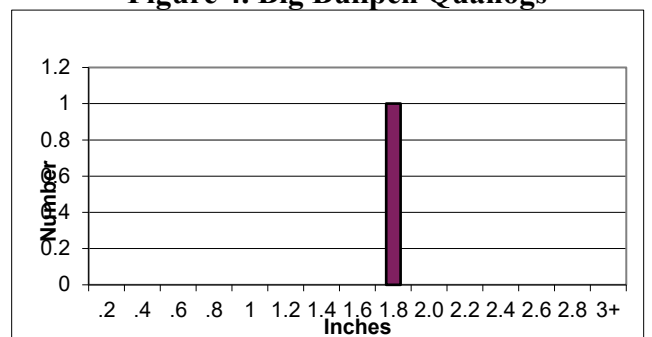


Figure 4. Big Bullpen Quahogs



Quahogs		
Length (in)	# of Clams	% Number
.2	0	0.0%
.4	0	0.0%
.6	0	0.0%
.8	0	0.0%
1	0	0.0%
1.2	0	0.0%
1.4	0	0.0%
1.6	0	0.0%
1.8	1	100.0%
2.0	0	0.0%
2.2	0	0.0%
2.4	0	0.0%
2.6	0	0.0%
2.8	0	0.0%
3+	0	0.0%



## Bull Rock

**Date:** 7/29/2021  
**Flat:** Bull Rock  
**Crew:** Devereaux/MRF

**Plot size:** 1' x 2' @ 200 ft  
**# Plots:** 16  
**# Acres:** SS - 4, Q - 3  
**Softshell**

Softshell Clams		
Length (in)	# of Clams	% Number
.2	2	3.6%
.4	0	0.0%
.6	4	7.3%
.8	2	3.6%
1	2	3.6%
1.2	1	1.8%
1.4	6	10.9%
1.6	10	18.2%
1.8	5	9.1%
2.0	6	10.9%
2.2	9	16.4%
2.4	7	12.7%
2.6	0	0.0%
2.8	1	1.8%
3+	0	0.0%

Total # of Clams	55
Total # of Clams > 2 in	23
% of clams > 2 in	41.82%
Total Average Bu./Acre	53.60
Total Avg. Bu./Acre > 2 in	38.02
Total standing crop (bu)	214
Total standing crop > 2 in	152
% of crop > 2 in	70.93%

Quahogs		
Length (in)	# of Clams	% Number
.2	0	0.0%
.4	0	0.0%
.6	1	4.5%
.8	4	18.2%
1	1	4.5%
1.2	1	4.5%
1.4	1	4.5%
1.6	0	0.0%
1.8	2	9.1%
2.0	2	9.1%
2.2	3	13.6%
2.4	2	9.1%
2.6	1	4.5%
2.8	0	0.0%
3+	4	18.2%

Figure 5. Bull Rock Softshell

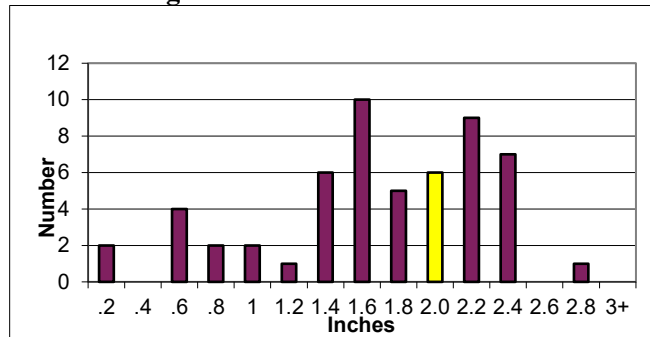
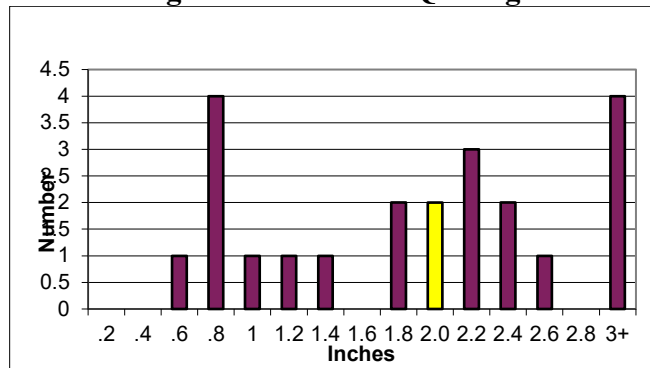


Figure 6. Bull Rock Quahogs





# Bunganuc

**Date:** 10/12/2021  
**Flat:** Bunganuc  
**Crew:** Devereaux/MRF

**Plot size:** 1' x 2' @ 100 ft  
**# Plots:** 65  
**# Acres:** SS - 34, Q - 13  
**Softshell**

Softshell Clams		
Length (in)	# of Clams	% Number
.2	3	1.0%
.4	3	1.0%
.6	12	3.9%
.8	17	5.5%
1	16	5.2%
1.2	29	9.4%
1.4	54	17.5%
1.6	34	11.0%
1.8	48	15.6%
2.0	37	12.0%
2.2	28	9.1%
2.4	12	3.9%
2.6	12	3.9%
2.8	2	0.6%
3+	1	0.3%

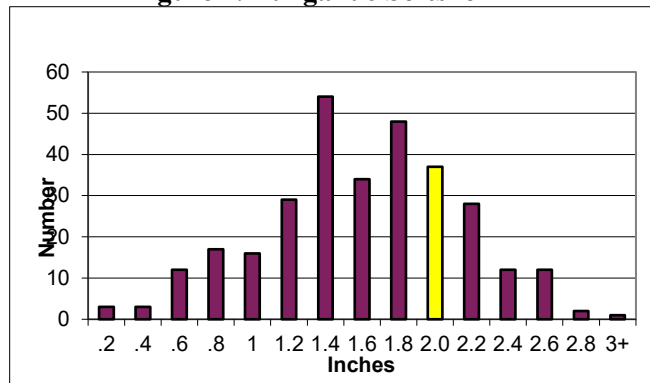
Total # of Clams	308
Total # of Clams > 2 in	92
% of clams > 2 in	29.87%
Total Average Bu./Acre	63.68
Total Avg. Bu./Acre > 2 in	36.75
Total standing crop (bu)	2165
Total standing crop > 2 in	1250
% of crop > 2 in	57.72%

## Quahog

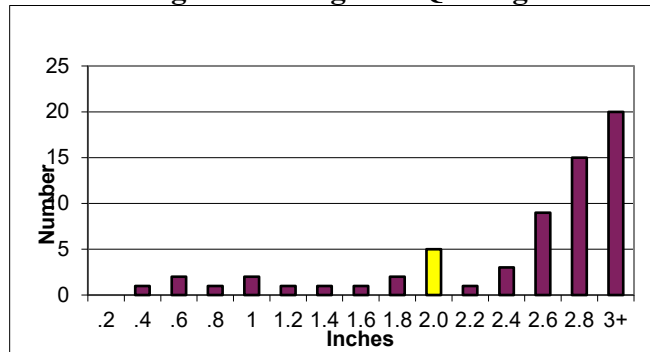
Total # of Clams	64
Total # of Clams > 2 in	53
% of clams > 2 in	82.81%
Total Average Bu./Acre	38.20
Total Avg. Bu./Acre > 2 in	37.21
Total standing crop (bu)	497
Total standing crop > 2 in	484
% of crop > 2 in	97.39%

Quahogs		
Length (in)	# of Clams	% Number
.2	0	0.0%
.4	1	1.6%
.6	2	3.1%
.8	1	1.6%
1	2	3.1%
1.2	1	1.6%
1.4	1	1.6%
1.6	1	1.6%
1.8	2	3.1%
2.0	5	7.8%
2.2	1	1.6%
2.4	3	4.7%
2.6	9	14.1%
2.8	15	23.4%
3+	20	31.3%

**Figure 7. Bunganuc Softshell**



**Figure 8. Bunganuc Quahog**





## Buttermilk Cove

**Date:** 7/29/2021 and 8/11/2021  
**Flat:** Buttermilk Cove  
**Crew:** Devereaux/Isaac/MRF

**Plot size:** 1' x 2' @ 100 ft  
**# Plots:** 33  
**# Acres:** SS – 8, Q - 1  
**Softshell**

Softshell Clams		
Length (in)	# of Clams	% Number
.2	0	0.0%
.4	0	0.0%
.6	0	0.0%
.8	0	0.0%
1	1	1.2%
1.2	6	7.1%
1.4	7	8.2%
1.6	17	20.0%
1.8	10	11.8%
2.0	13	15.3%
2.2	10	11.8%
2.4	10	11.8%
2.6	3	3.5%
2.8	2	2.4%
3+	6	7.1%

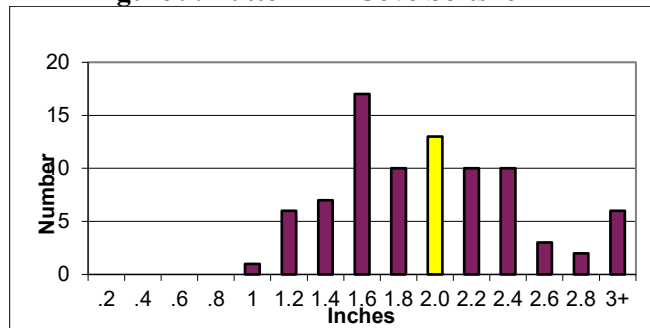
Total # of Clams	85
Total # of Clams > 2 in	44
% of clams > 2 in	51.76%
Total Average Bu./Acre	54.20
Total Avg. Bu./Acre > 2 in	41.44
Total standing crop (bu)	434
Total standing crop > 2 in	331
% of crop > 2 in	76.45%

### Quahog

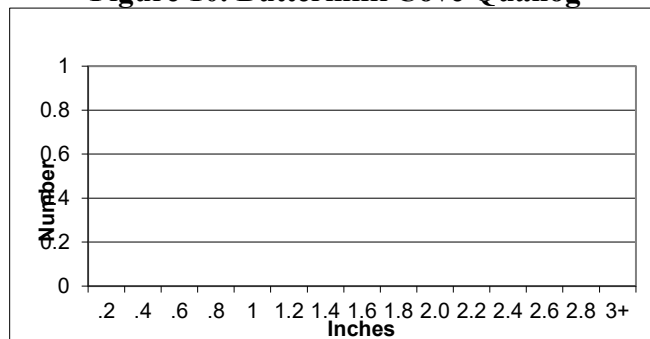
Total # of Clams	0
Total # of Clams > 2 in	0
% of clams > 2 in	0
Total Average Bu./Acre	0.00
Total Avg. Bu./Acre > 2 in	0.00
Total standing crop (bu)	0
Total standing crop > 2 in	0
% of crop > 2 in	0

Quahogs		
Length (in)	# of Clams	% Number
.2	0	0
.4	0	0
.6	0	0
.8	0	0
1	0	0
1.2	0	0
1.4	0	0
1.6	0	0
1.8	0	0
2.0	0	0
2.2	0	0
2.4	0	0
2.6	0	0
2.8	0	0
3+	0	0

**Figure 9. Buttermilk Cove Softshell**



**Figure 10. Buttermilk Cove Quahog**





## Clay Cove

**Date:** 6/30/2021  
**Flat:** Clay Cove  
**Crew:** Devereaux/Maddy/MRF

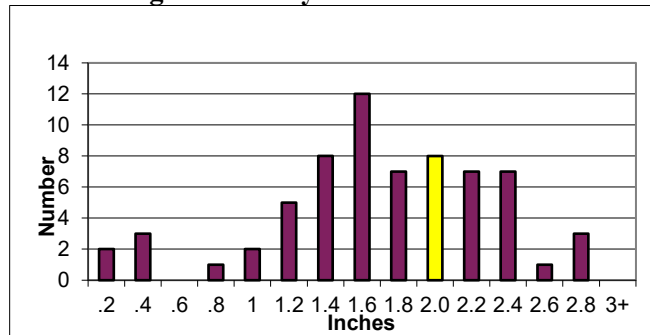
**Plot size:** 1' x 2' @ 100 ft  
**# Plots:** 33  
**# Acres:** SS - 17, Q - 17  
**Softshell**

Softshell Clams		
Length (in)	# of Clams	% Number
.2	2	3.0%
.4	3	4.5%
.6	0	0.0%
.8	1	1.5%
1	2	3.0%
1.2	5	7.6%
1.4	8	12.1%
1.6	12	18.2%
1.8	7	10.6%
2.0	8	12.1%
2.2	7	10.6%
2.4	7	10.6%
2.6	1	1.5%
2.8	3	4.5%
3+	0	0.0%

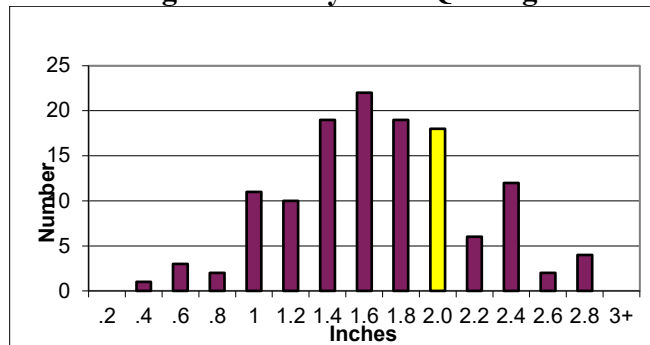
Total # of Clams	66
Total # of Clams > 2 in	26
% of clams > 2 in	39.39%
Total Average Bu./Acre	32.20
Total Avg. Bu./Acre > 2 in	22.12
Total standing crop (bu)	547
Total standing crop > 2 in	376
% of crop > 2 in	68.69%

Quahog		
Length (in)	# of Clams	% Number
.2	0	0.0%
.4	1	0.8%
.6	3	2.3%
.8	2	1.6%
1	11	8.5%
1.2	10	7.8%
1.4	19	14.7%
1.6	22	17.1%
1.8	19	14.7%
2.0	18	14.0%
2.2	6	4.7%
2.4	12	9.3%
2.6	2	1.6%
2.8	4	3.1%
3+	0	0.0%

**Figure 11. Clay Cove Softshell**



**Figure 12. Clay Cove Quahog**





## Harpowell Cove

**Date:** 8/10/2021  
**Flat:** Harpswell Cove  
**Crew:** Devereaux/MRF

**Plot size:** 1' x 2' @ 200 ft  
**# Plots:** 66  
**# Acres:** SS - 20, Q - 0  
**Softshell**

Softshell Clams		
Length (in)	# of Clams	% Number
.2	0	0.0%
.4	1	0.7%
.6	9	6.4%
.8	8	5.7%
1	2	1.4%
1.2	0	0.0%
1.4	4	2.9%
1.6	3	2.1%
1.8	11	7.9%
2.0	20	14.3%
2.2	13	9.3%
2.4	30	21.4%
2.6	16	11.4%
2.8	12	8.6%
3+	11	7.9%

Total # of Clams	140
Total # of Clams > 2 in	102
% of clams > 2 in	72.86%
Total Average Bu./Acre	56.25
Total Avg. Bu./Acre > 2 in	52.34
Total standing crop (bu)	1125
Total standing crop > 2 in	1047
% of crop > 2 in	93.05%

### Quahog

Total # of Clams	0
Total # of Clams > 2 in	0
% of clams > 2 in	0
Total Average Bu./Acre	0.00
Total Avg. Bu./Acre > 2 in	0.00
Total standing crop (bu)	0
Total standing crop > 2 in	0
% of crop > 2 in	0

Quahogs		
Length (in)	# of Clams	% Number
.2	0	0
.4	0	0
.6	0	0
.8	0	0
1	0	0
1.2	0	0
1.4	0	0
1.6	0	0
1.8	0	0
2.0	0	0
2.2	0	0
2.4	0	0
2.6	0	0
2.8	0	0
3+	0	0

Figure 13. Harpswell Cove Softshell

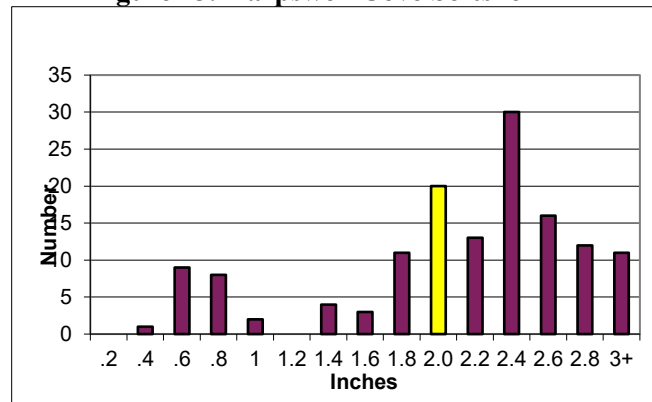
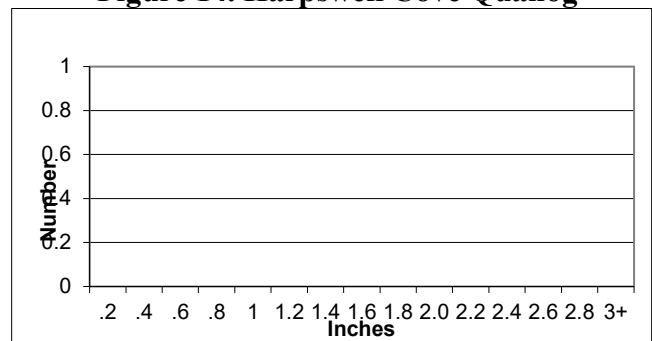


Figure 14. Harpswell Cove Quahog







## Little Bullpen

**Date:** 7/29/2021  
**Flat:** Little Bullpen  
**Crew:** Devereaux/Isaac/MRF

**Plot size:** 1' x 2' @ 100 ft  
**# Plots:** 52  
**# Acres:** SS - 5, Q - 0  
**Softshell**

Softshell Clams		
Length (in)	# of Clams	% Number
.2	0	0.0%
.4	1	0.6%
.6	2	1.2%
.8	3	1.7%
1	17	9.9%
1.2	17	9.9%
1.4	18	10.5%
1.6	20	11.6%
1.8	29	16.9%
2.0	20	11.6%
2.2	19	11.0%
2.4	14	8.1%
2.6	9	5.2%
2.8	2	1.2%
3+	1	0.6%

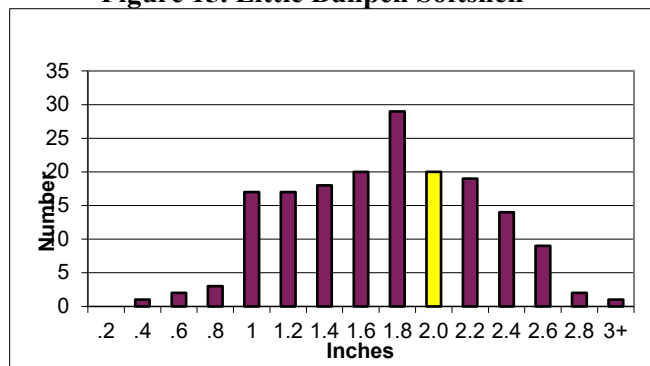
Total # of Clams	172
Total # of Clams > 2 in	65
% of clams > 2 in	37.79%
Total Average Bu./Acre	52.45
Total Avg. Bu./Acre > 2 in	34.37
Total standing crop (bu)	262
Total standing crop > 2 in	172
% of crop > 2 in	65.54%

### Quahog

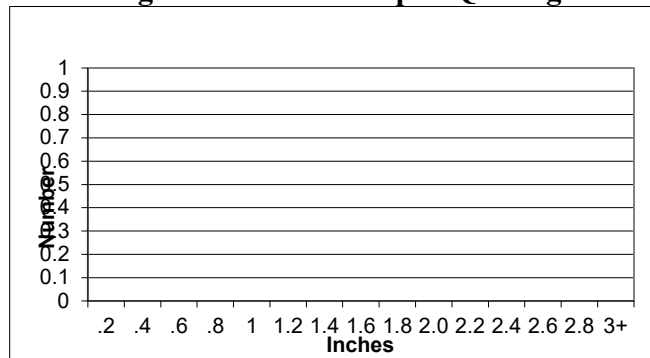
Total # of Clams	0
Total # of Clams > 2 in	0
% of clams > 2 in	0
Total Average Bu./Acre	0.00
Total Avg. Bu./Acre > 2 in	0.00
Total standing crop (bu)	0
Total standing crop > 2 in	0
% of crop > 2 in	0

Quahogs		
Length (in)	# of Clams	% Number
.2	0	0
.4	0	0
.6	0	0
.8	0	0
1	0	0
1.2	0	0
1.4	0	0
1.6	0	0
1.8	0	0
2.0	0	0
2.2	0	0
2.4	0	0
2.6	0	0
2.8	0	0
3+	0	0

**Figure 15. Little Bullpen Softshell**



**Figure 16. Little Bullpen Quahog**





## Long Reach

**Date:** 8/10/2021 and 8/11/2021

**Flat:** Long Reach

**Crew:** Devereaux/MRF

**Plot size:** 1' x 2' @ 100 ft

**# Plots:** 56

**# Acres:** SS - 19, Q - 4

### Softshell

Softshell Clams		
Length (in)	# of Clams	% Number
.2	4	5.4%
.4	1	1.4%
.6	1	1.4%
.8	1	1.4%
1	1	1.4%
1.2	5	6.8%
1.4	6	8.1%
1.6	6	8.1%
1.8	4	5.4%
2.0	14	18.9%
2.2	5	6.8%
2.4	10	13.5%
2.6	10	13.5%
2.8	3	4.1%
3+	3	4.1%

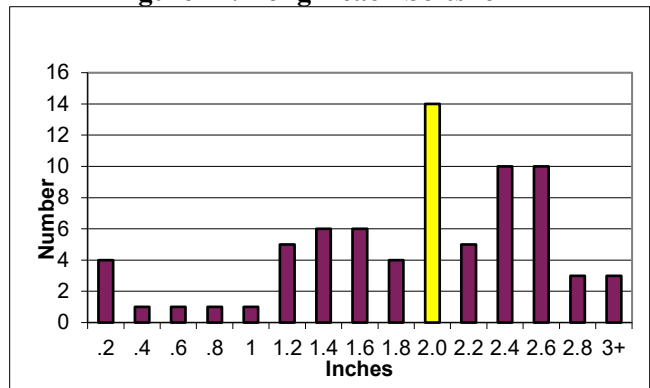
Total # of Clams	74
Total # of Clams > 2 in	45
% of clams > 2 in	60.81%
Total Average Bu./Acre	28.60
Total Avg. Bu./Acre > 2 in	24.94
Total standing crop (bu)	543
Total standing crop > 2 in	474
% of crop > 2 in	87.22%

### Quahog

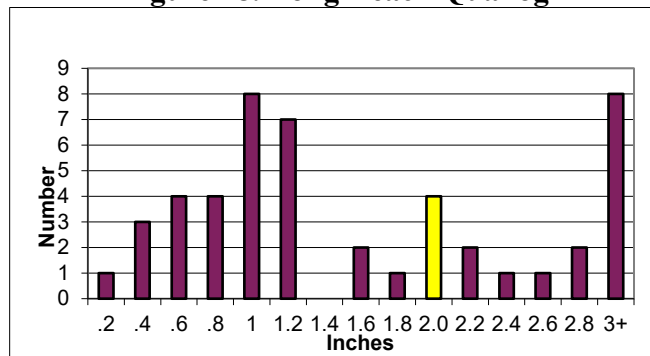
Total # of Clams	48
Total # of Clams > 2 in	18
% of clams > 2 in	37.50%
Total Average Bu./Acre	15.49
Total Avg. Bu./Acre > 2 in	13.43
Total standing crop (bu)	62
Total standing crop > 2 in	54
% of crop > 2 in	86.71%

Quahogs		
Length (in)	# of Clams	% Number
.2	1	2.1%
.4	3	6.3%
.6	4	8.3%
.8	4	8.3%
1	8	16.7%
1.2	7	14.6%
1.4	0	0.0%
1.6	2	4.2%
1.8	1	2.1%
2.0	4	8.3%
2.2	2	4.2%
2.4	1	2.1%
2.6	1	2.1%
2.8	2	4.2%
3+	8	16.7%

**Figure 17. Long Reach Softshell**



**Figure 18. Long Reach Quahog**





## Maquoit

**Date:** 12/1/2021  
**Flat:** Maquoit  
**Crew:** Devereaux/MRF

**Plot size:** 1' x 2' @ 200 ft  
**# Plots:** 52  
**# Acres:** SS – 143, Q - 150  
**Softshell**

Softshell Clams		
Length (in)	# of Clams	% Number
.2	2	1.3%
.4	2	1.3%
.6	7	4.7%
.8	2	1.3%
1	11	7.4%
1.2	7	4.7%
1.4	17	11.4%
1.6	10	6.7%
1.8	16	10.7%
2.0	20	13.4%
2.2	19	12.8%
2.4	19	12.8%
2.6	10	6.7%
2.8	6	4.0%
3+	1	0.7%

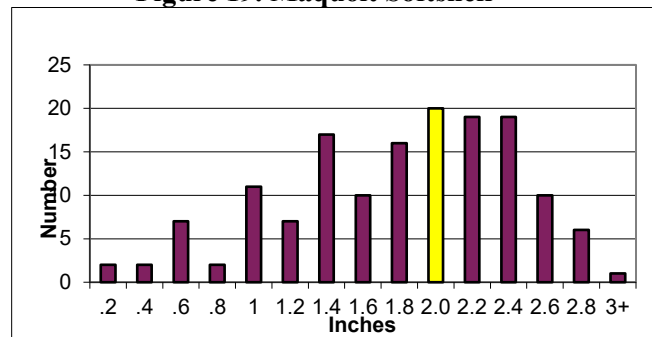
Total # of Clams	149
Total # of Clams > 2 in	75
% of clams > 2 in	50.34%
Total Average Bu./Acre	52.61
Total Avg. Bu./Acre > 2 in	41.79
Total standing crop (bu)	7523
Total standing crop > 2 in	5976
% of crop > 2 in	79.43%

### Quahog

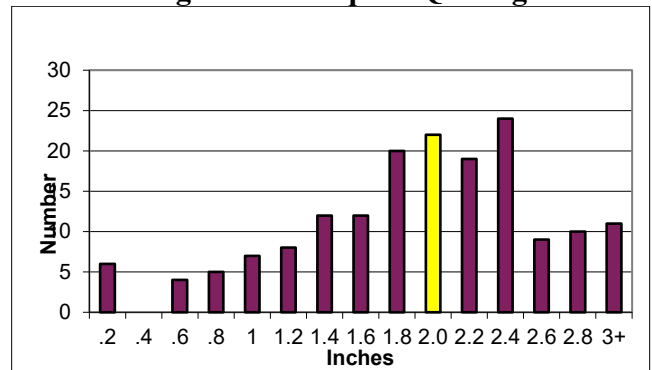
Total # of Clams	169
Total # of Clams > 2 in	95
% of clams > 2 in	56.21%
Total Average Bu./Acre	71.11
Total Avg. Bu./Acre > 2 in	59.59
Total standing crop (bu)	10667
Total standing crop > 2 in	8939
% of crop > 2 in	83.80%

Quahogs		
Length (in)	# of Clams	% Number
.2	6	3.6%
.4	0	0.0%
.6	4	2.4%
.8	5	3.0%
1	7	4.1%
1.2	8	4.7%
1.4	12	7.1%
1.6	12	7.1%
1.8	20	11.8%
2.0	22	13.0%
2.2	19	11.2%
2.4	24	14.2%
2.6	9	5.3%
2.8	10	5.9%
3+	11	6.5%

**Figure 19. Maquoit Softshell**



**Figure 20. Maquoit Quahog**





## Middle Bay

**Date:** 10/14/2021  
**Flat:** Middle Bay  
**Crew:** Devereaux/Maddy/MRF

**Plot size:** 1' x 2' @ 200 ft  
**# Plots:** 52  
**# Acres:** SS - 42, Q - 30  
**Softshell**

Softshell Clams		
Length (in)	# of Clams	% Number
.2	18	16.1%
.4	13	11.6%
.6	5	4.5%
.8	4	3.6%
1	4	3.6%
1.2	2	1.8%
1.4	6	5.4%
1.6	3	2.7%
1.8	8	7.1%
2.0	7	6.3%
2.2	12	10.7%
2.4	12	10.7%
2.6	10	8.9%
2.8	7	6.3%
3+	1	0.9%

Total # of Clams	112
Total # of Clams > 2 in	49
% of clams > 2 in	43.75%
Total Average Bu./Acre	34.99
Total Avg. Bu./Acre > 2 in	30.28
Total standing crop (bu)	1470
Total standing crop > 2 in	1272
% of crop > 2 in	86.54%

### Quahog

Total # of Clams	81
Total # of Clams > 2 in	54
% of clams > 2 in	66.67%
Total Average Bu./Acre	40.83
Total Avg. Bu./Acre > 2 in	38.13
Total standing crop (bu)	1225
Total standing crop > 2 in	1144
% of crop > 2 in	93.39%

Quahogs		
Length (in)	# of Clams	% Number
.2	0	0.0%
.4	0	0.0%
.6	2	2.5%
.8	3	3.7%
1	9	11.1%
1.2	8	9.9%
1.4	1	1.2%
1.6	2	2.5%
1.8	2	2.5%
2.0	8	9.9%
2.2	5	6.2%
2.4	12	14.8%
2.6	12	14.8%
2.8	10	12.3%
3+	7	8.6%

Figure 21. Middle Bay Softshell

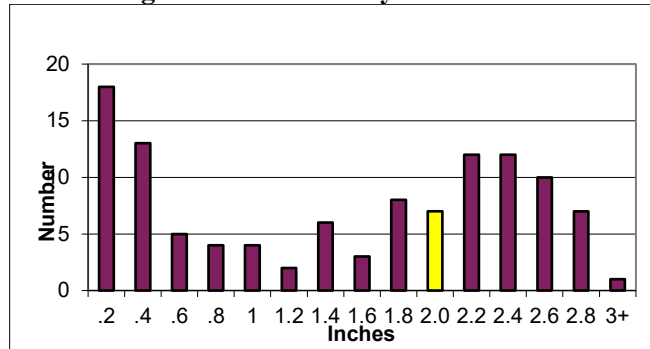
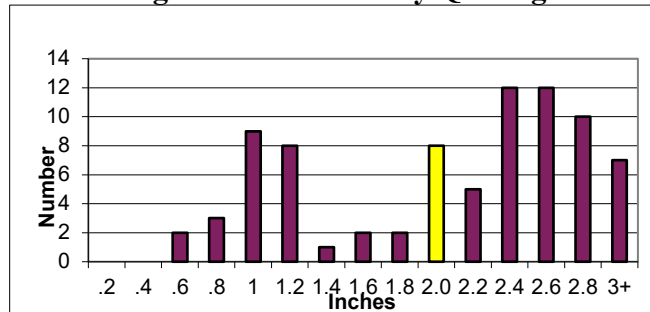


Figure 22. Middle Bay Quahog





## Miller Creek

**Date:** 6/28/2022  
**Flat:** Miller Creek  
**Crew:** Devereaux/MRF

**Plot size:** 1' x 2' @ 100 ft  
**# Plots:** 74  
**# Acres:** SS - 44, Q - 51  
**Softshell**

Softshell Clams		
Length (in)	# of Clams	% Number
.2	15	20.0%
.4	6	8.0%
.6	3	4.0%
.8	0	0.0%
1	2	2.7%
1.2	5	6.7%
1.4	7	9.3%
1.6	9	12.0%
1.8	7	9.3%
2.0	9	12.0%
2.2	6	8.0%
2.4	4	5.3%
2.6	2	2.7%
2.8	0	0.0%
3+	0	0.0%

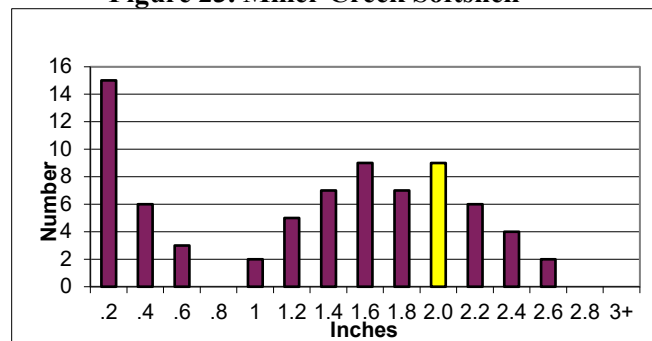
Total # of Clams	75
Total # of Clams > 2 in	21
% of clams > 2 in	28.00%
Total Average Bu./Acre	11.09
Total Avg. Bu./Acre > 2 in	7.07
Total standing crop (bu)	488
Total standing crop > 2 in	311
% of crop > 2 in	63.77%

### Quahog

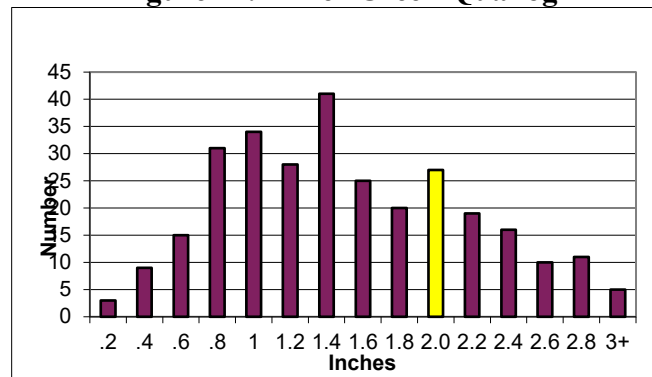
Total # of Clams	294
Total # of Clams > 2 in	88
% of clams > 2 in	29.93%
Total Average Bu./Acre	52.91
Total Avg. Bu./Acre > 2 in	36.26
Total standing crop (bu)	2699
Total standing crop > 2 in	1849
% of crop > 2 in	68.53%

Quahogs		
Length (in)	# of Clams	% Number
.2	3	1.0%
.4	9	3.1%
.6	15	5.1%
.8	31	10.5%
1	34	11.6%
1.2	28	9.5%
1.4	41	13.9%
1.6	25	8.5%
1.8	20	6.8%
2.0	27	9.2%
2.2	19	6.5%
2.4	16	5.4%
2.6	10	3.4%
2.8	11	3.7%
3+	5	1.7%

**Figure 23. Miller Creek Softshell**



**Figure 24. Miller Creek Quahog**





## Thomas Point Beach

**Date:** 7/26/2021, 8/31/2021, 10/13/2021  
**Flat:** Thomas Point Beach  
**Crew:** Devereaux/Maddy/MRF

**Plot size:** 1' x 2' @ 100 ft  
**# Plots:** 71  
**# Acres:** SS - 57, Q - 37  
**Softshell**

Softshell Clams		
Length (in)	# of Clams	% Number
.2	12	0.8%
.4	16	1.0%
.6	15	1.0%
.8	26	1.7%
1	102	6.7%
1.2	153	10.0%
1.4	210	13.7%
1.6	292	19.1%
1.8	148	9.7%
2.0	228	14.9%
2.2	153	10.0%
2.4	98	6.4%
2.6	38	2.5%
2.8	21	1.4%
3+	17	1.1%

Total # of Clams	1529
Total # of Clams > 2 in	555
% of clams > 2 in	36.30%
Total Average Bu./Acre	322.68
Total Avg. Bu./Acre > 2 in	206.99
Total standing crop (bu)	18393
Total standing crop > 2 in	11799
% of crop > 2 in	64.15%

### Quahog

Total # of Clams	41
Total # of Clams > 2 in	26
% of clams > 2 in	63.41%
Total Average Bu./Acre	14.84
Total Avg. Bu./Acre > 2 in	13.51
Total standing crop (bu)	549
Total standing crop > 2 in	500
% of crop > 2 in	91.04%

Quahogs		
Length (in)	# of Clams	% Number
.2	0	0.0%
.4	1	2.4%
.6	2	4.9%
.8	4	9.8%
1	1	2.4%
1.2	2	4.9%
1.4	0	0.0%
1.6	1	2.4%
1.8	4	9.8%
2.0	4	9.8%
2.2	6	14.6%
2.4	3	7.3%
2.6	3	7.3%
2.8	5	12.2%
3+	5	12.2%

Figure 25. Thomas Point Beach Softshell

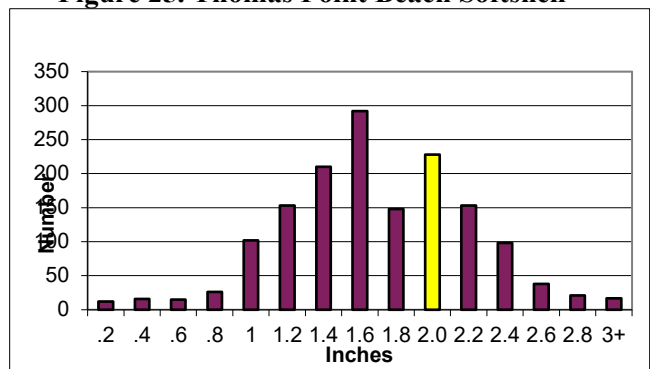


Figure 26. Thomas Point Beach Quahog

